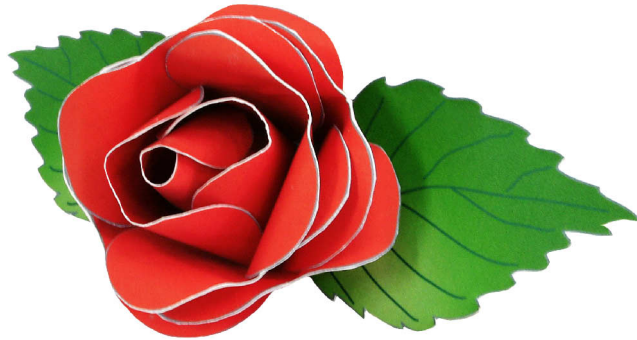


Canon Rose (Red) : Parts

Canon® is a registered trademark of Canon Inc. © Canon Inc. © Yukiko Tanikoshi



You will need

scissors, paste, a used ballpoint pen (tracing along the fold lines makes them easier to fold)

Explanation of Symbols

▲ Numbered glue tabs

Glue the parts together in the order indicated by the numbers.



[Caution]

Glue, scissors and other tools may be dangerous to young children so be sure to keep them out of the reach of young children.

Parts

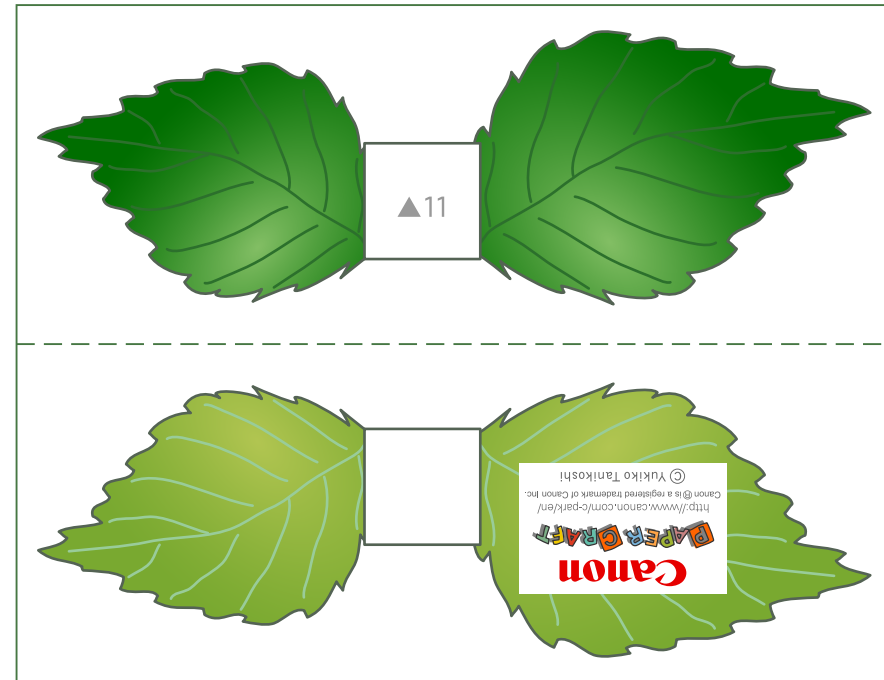
— Cut line

- - - - Mountain fold

- · - · - Valley fold

— Slot

1

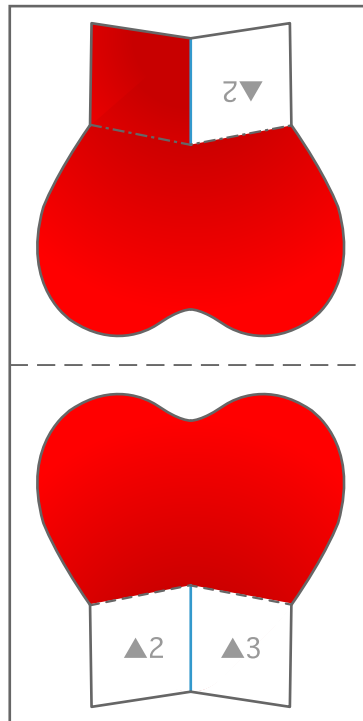


Canon Rose (Red) : Parts

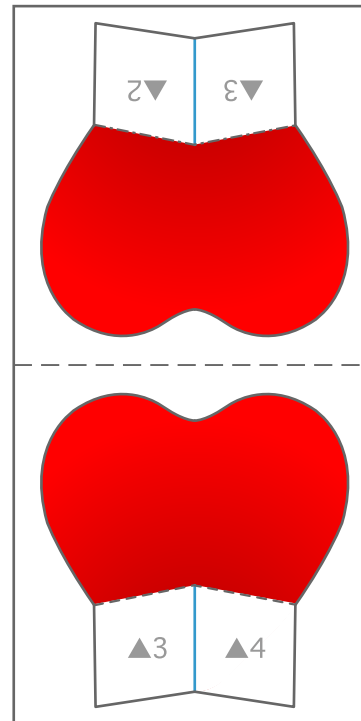
Canon® is a registered trademark of Canon Inc. © Canon Inc. © Yukiko Tanikoshi

Parts

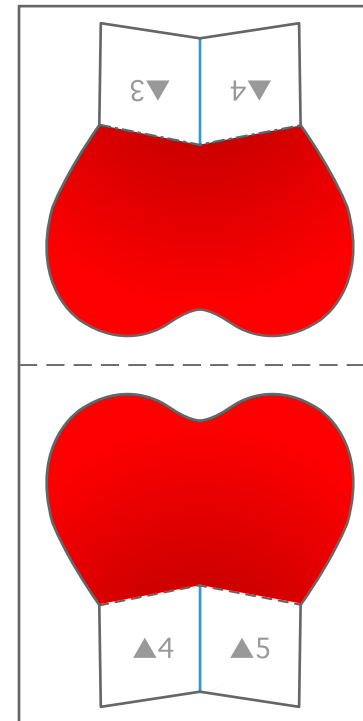
2



3



4

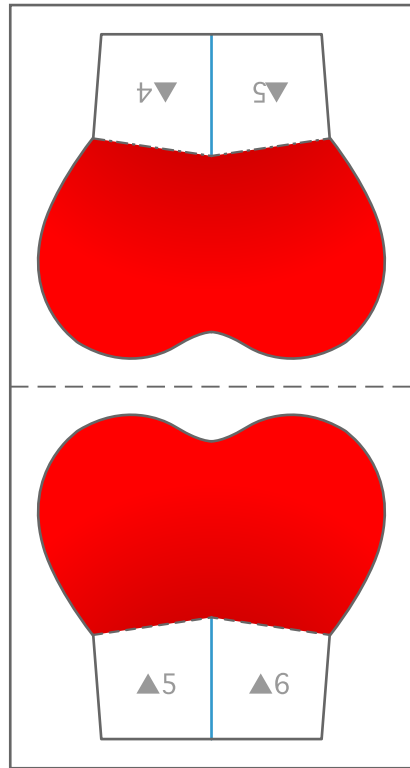


Canon Rose (Red) : Parts

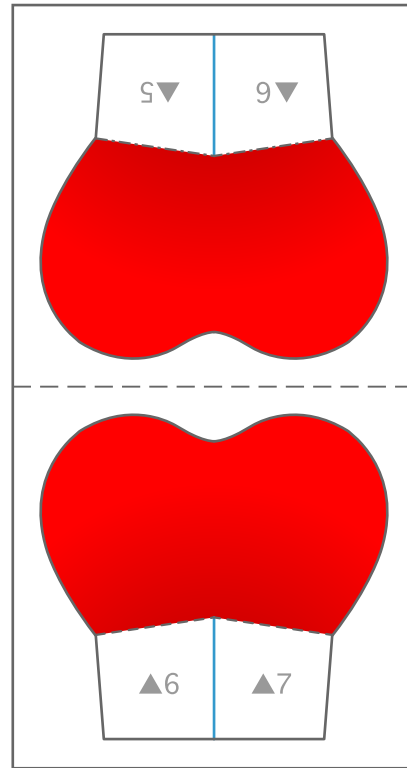
Canon® is a registered trademark of Canon Inc. © Canon Inc. © Yukiko Tanikoshi

Parts

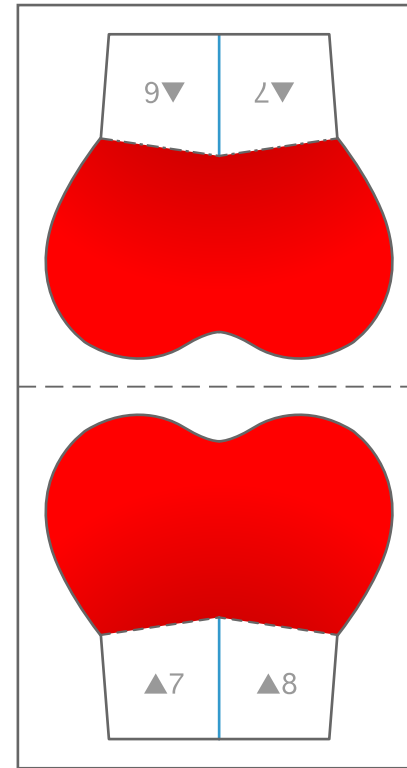
5



6



7

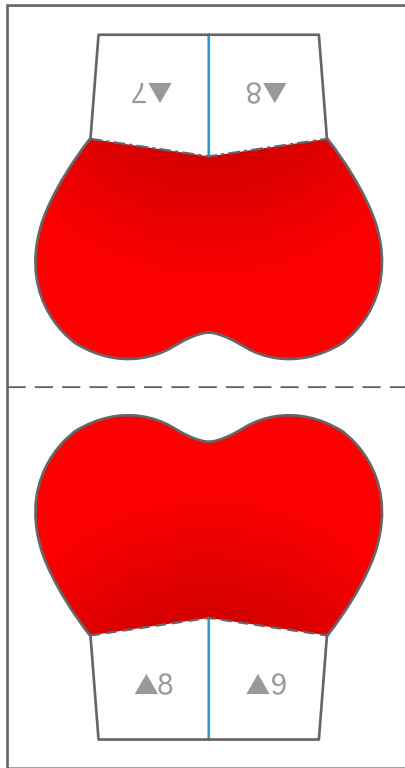


Canon Rose (Red) : Parts

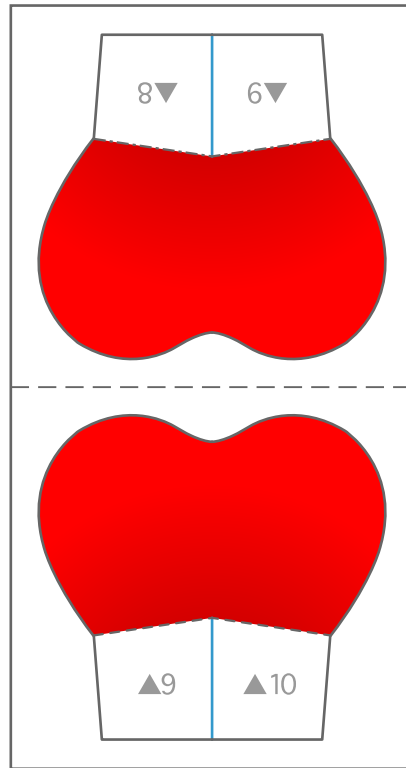
Canon® is a registered trademark of Canon Inc. © Canon Inc. © Yukiko Tanikoshi

Parts

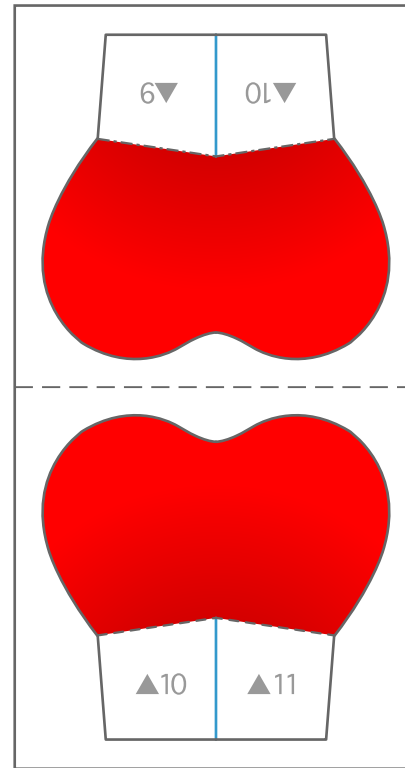
8



9



10



11

